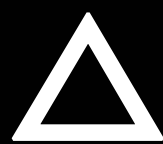
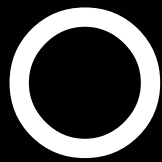


Concluding Remark



Yasushi Suto

Department of Physics, The University of Tokyo

**The 1st Joint Subaru/Gemini
Science Conference**

Kyoto University, May 21, 2009

Good old days of WFMOS negotiation... (April 8, 2009)



**During the WFMOS
negotiation process,
I learned a lot from them**

- **Neither is better or worse,
simply different**
- **Understand and respect
the difference between us**

Implicit rules dominate Japan

- The Japanese have fairly common implicit assumptions and rules
 - No clear written agreement
 - This is very convenient and comfortable if you know how to behave, but can be embarrassing if you do not
- This strongly limits the diversity and possible new opportunities, especially in science

Don't take anything granted

How to mark right answers and wrong answers ?

"Japanese rule"

$1+2 = 3$

$1+3 = 5$

	right	wrong
Japan	○	✓、×
Korea	○	×
US、France、Italy、 China、、、	✓	○、×
Germany	✓、(r)	f、(underline)、 vertical bars
Russia	(nothing)	×、(underline)

Important Japanese words:

◎ ○ △ ×

The Japanese often use them as follows;

“Let me know if you want to join us for a drink tonight. Are you ○、△、 or × ?”

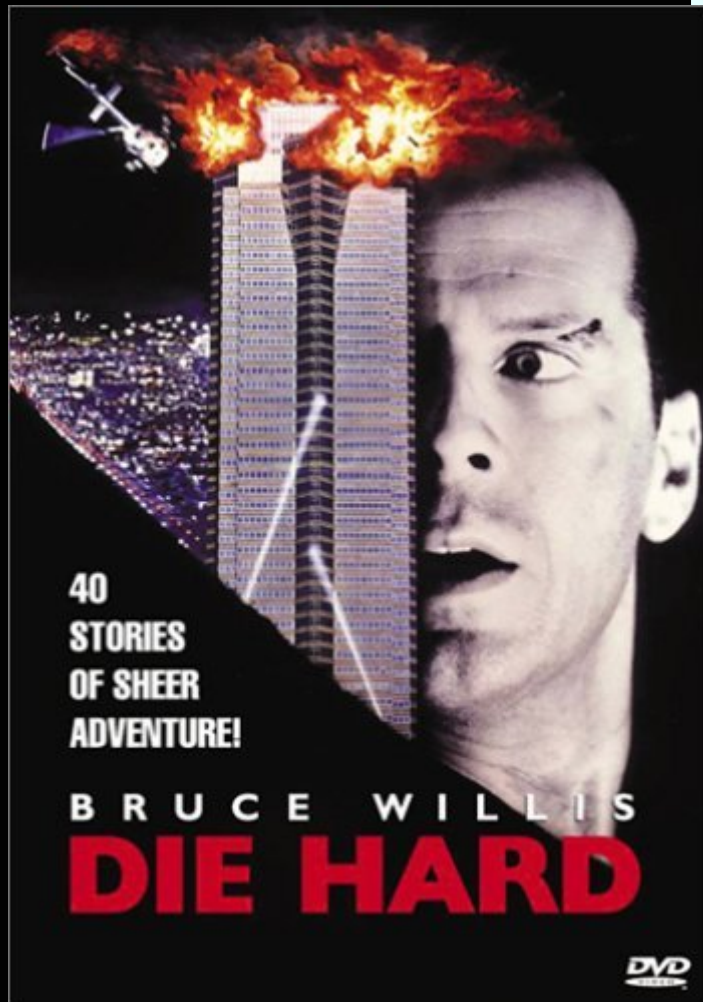
“Sounds nice ! Surely I am ○. ”

◎	wonderful, great
○	good, correct, right
△	uncertain, not so good
×	bad, wrong

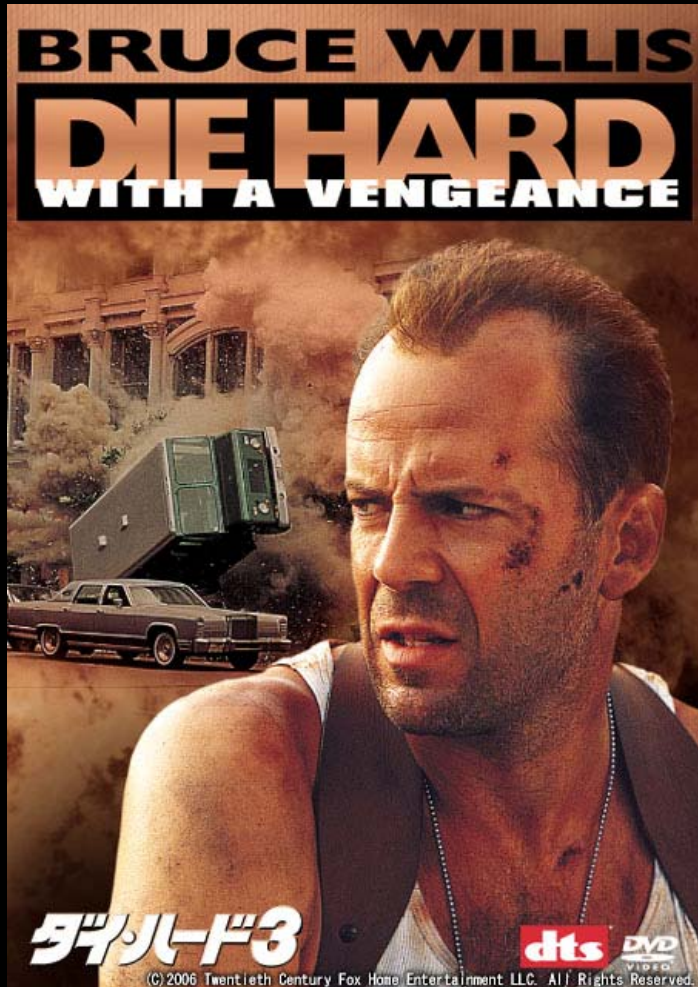
My WFMOS evaluation sheet

Science case	◎
Japanese community's enthusiasm	× ⇒ △ ⇒ ○
Directors' effort (Doug Simons + Masa Hayashi)	◎
Funding	× × ×

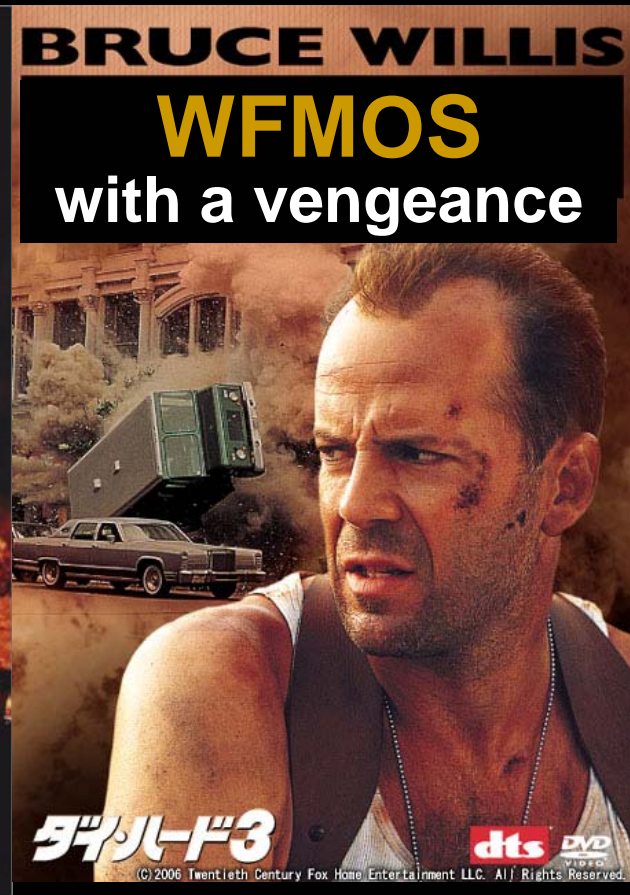
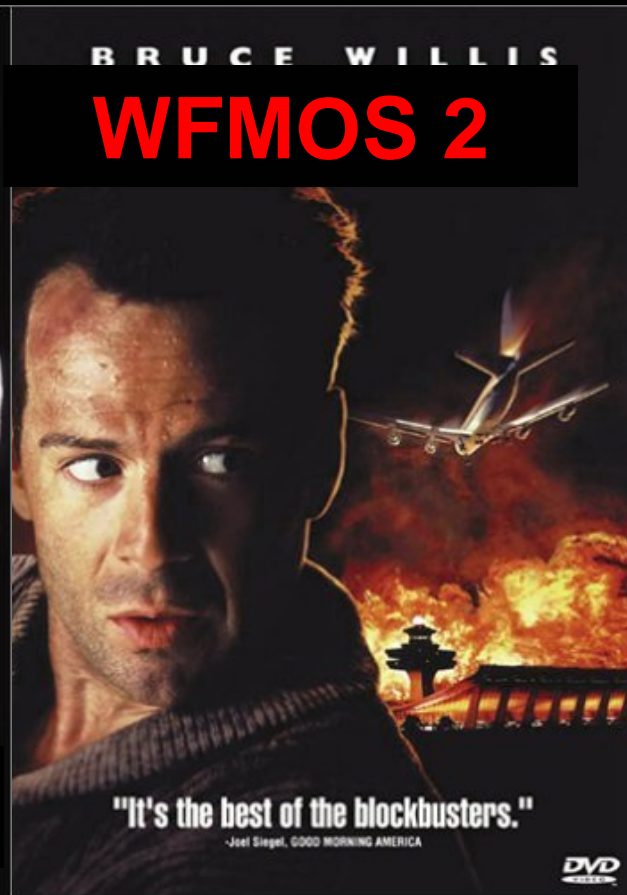
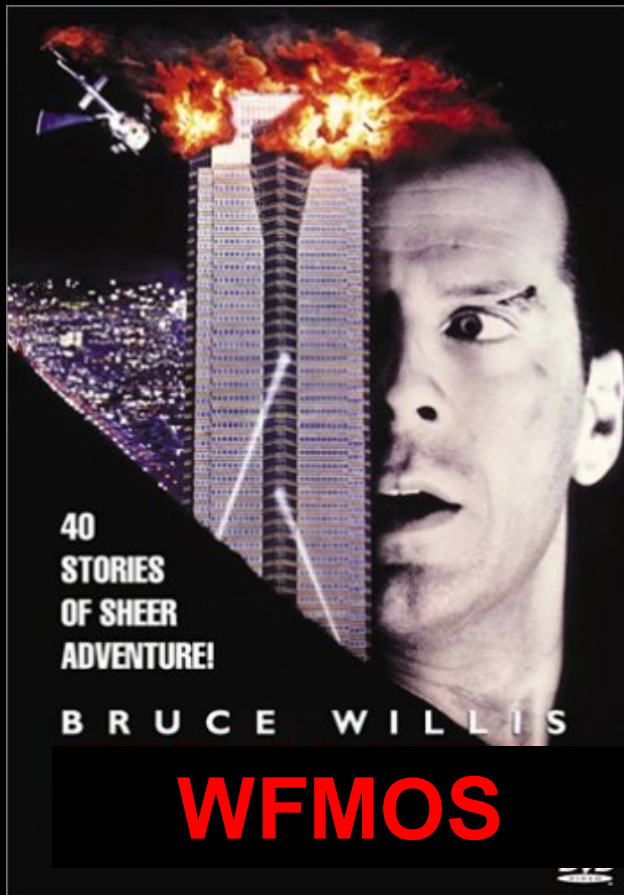
The popular films “Die hard” really die hard



The popular films “Die hard” really die hard



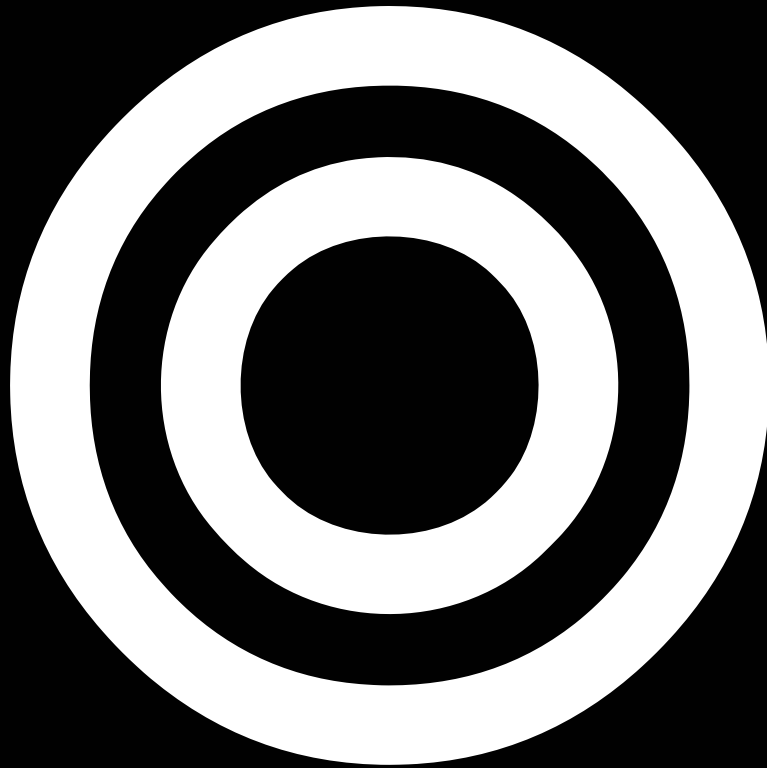
The popular projects “WFMOS” die hard as well



My personal evaluation sheet of this conference

Science presentations	○
Swine flu	×
Excursion	○
(Buddhist monk tour guide at Sanzen-in)	◎
Banquet	○

Final score of this conference



Let us thank together

- **SOC co-chairs**: Masashi Chiba & Tim Beers
- **LOCs**: Kohji Ohta, Hajime Sugai, Tomonori Totani, Hideko Nomura, & Atsuko Nitta
- **Director of Subaru telescope**: Masa Hayashi
- **Director of Gemini telescope**: Doug Simons
- Graduate students of Kyoto University
- **All the participants**